

Messenger

Summerfield

WALDORF SCHOOL AND FARM

APRIL 26, 2018
VOLUME 30, ISSUE 8

TWELFTH ANNUAL DINNER AND AUCTION ON THE FARM

Farm to Feast SATURDAY, MAY 19, 2018, 4-9PM

Please join us on Saturday, May 19, for **Farm to Feast 2018**, our largest fundraiser of the year!

"Little thoughts will get us nowhere, so we must pluck up the courage to think great thoughts"

~ RUDOLF STEINER

This year we will recognize our resilience as a community and celebrate our strength with a familiar and cozy farm-to-table dinner under the walnut tree. Enjoy a unique silent auction with artisanal items while sampling delicious appetizers and amazing wines from local vintners. We will all then come together for a beautiful, local and seasonal dinner accompanied by live music and compelling speakers. Food and libations will continue throughout the evening. Here's a quick overview:

- 4:00-6:00pm Wine Tasting with exclusive, award winning wineries, passed appetizers, live music and silent auction
- 6:00-7:30pm Dinner Seating and service, guest speakers, live auction and Fund-A-Need
- 7:30-10:00pm Dessert and coffee service, live music by the Honkeytonk Stumbleweeds with dancing and outdoor bonfire



THANK YOU to our generous, award-winning chefs, vintners and community partners:

Feast Makers: Lowell Sheldon and Natalie Goble of Handline and Lowell's, Moishe Hahn-Schuman and Matthew Williams of Ramen Gaijin, Sarah Piccolo of Fork Roadhouse & Catering, Jennifer Johnson and Serafina Palandech of Hip Chick Farms, Joe Zobel of Lowell's, Emma Uribe of Handline, Adam Davidoff and Ryan Power of New Family Farm, Laura Matis of Acre Coffee, and our own Bill Dator and Dana Revallo of Summerfield. Dinner will be orchestrated by Nick Peyton of Cyrus, Healdsburg Bar & Grill and Two Birds/One Stone

(Continued on Page Two)

Inside this Issue:

Farm to Feast	1
May Faire	3
Kindergarten Teacher News	4
Board Elections	4
Alumni Profile	5
Pieces of April on the Farm	6
Circus Camps	8
Marketplace	9
Eighth Grade Pastels	12

Event Dates:

Senior Project Presentations

SECOND NIGHT: Friday, Apr 27,
at 6:30pm, Sophia Hall

May Faire Celebration

Friday, May 4, SWSF Campus

Fifth Grade Olympiad

Friday, May 11, SWSF Campus

HS Spring Music Concert

Tuesday, May 15, at 7pm, Sophia Hall

Farm to Feast Dinner & Auction

Saturday, May 19, 4-10pm, SWSF Farm

Eighth Grade Play

Thursday & Friday, May 24 & 25



(Continued from Page One)

Vintners: Davis Family, Littorai, Martinelli, Porter-Bass, CrossBarn Winery, Old World, Small Vines, Truett Hurst, VML and West + Wilder

Local Community Partners: Lagunitas, Revive Kombucha, Brew Coffee and Beer, Green Star Farms, Costeaux French Bakery, The Kefiry and Guayaki

And thank you to our many generous sponsors and volunteers who make this event possible!

Farm to Feast is a charity event, all proceeds benefit SWSF. Space is limited, buy your tickets soon! Tickets: \$110/person, 21+ years of age only. Buy online: www.farmtofeast.org.

Our online auction opened on April 25 on biddingforgood.com/farmtofeast!

~Caryn Stone, Development Coordinator



The Spirit of Volunteering

Spring is in the air, and preparations are underway for our annual Farm to Feast fundraising event. As many of you know, this is our largest fundraiser of the year—one that is vital to the daily operations of our school. What many of you may not know is that this event could not happen without a lot of volunteers!

One of the most amazing qualities of this school is the sense of community. As a parent, I am always thinking of ways to volunteer, particularly in areas that are in need of my skill set. I have come to learn that Farm to Feast offers opportunities for a great variety of interests, abilities and schedules! If you are creative you might like to help with décor, flower arranging or promotions. If you are more geared towards organization or administrative work, there is a place for you on the set-up team.

Even if you don't have much time to give, a little effort is hugely appreciated and needed. Plus, you will meet some great people along the way, and most likely form new friendships.

Farm to Feast is all about raising funds for our community and wonderful school and, yet, at the same time, this lovely event builds and strengthens our own parent community through volunteering together. See you at Farm to Feast!

Please contact our Farm to Feast Volunteer Coordinator, carrie@summerfieldwaldorf.org for more information.

~Hayden Terstegge,
Development Office

May Faire Apron Sale

Summerfield's Handwork Guild has been hard at work sewing popular Japanese-style Cross-Back Aprons, similar to those worn by the early childhood teachers. These will be sold at the May Faire, just in time for Mother's Day. This year's choices are a natural organic linen from Belle Notte Linens and a heavier weight linen print.

All proceeds benefit the school's Lunch Program. Please bring cash or a check. Sliding scale \$60 to \$80.

If you can't be at the May Faire but would like an apron, please email me at amullenix@gmail.com.

Thank you for your support!

~Addie Mullenix,
for the Handwork Guild



May Faire: Celebrating Spring & Community

By Michelle Bovard on behalf of the May Faire Committee

We are all familiar with the proverb “April showers bring May flowers,” and so it was fitting that the first morning back from Spring Break was a drizzly April morning. As our May Faire committee is busy making plans, we can rest assured that Mother Nature is busy growing the bounty of flowers that will soon adorn our children’s crowns and decorate our Faire. We hope that you will join us for our annual community **May Faire celebration on Friday, May 4.**

The May Pole dancing will again take place in the freshness of the morning, when the children are able to experience it in a deep and reverent way, and then carry that experience with them throughout the day. Of course all families are warmly welcomed to watch the children dance (10–11:30am) and then join in the community dance that follows. When the dancing comes to a close, the children will return to class and complete the school day. When the 3pm bell rings, the fun-filled Faire begins.

Elements of the Faire will include flower garland-making, crafts, activities, the dump bucket (bring a towel and extra clothes!) food

and music. The cost for children’s unlimited activities will be \$10 for one child, \$13 for two siblings, and \$18 for three siblings. A taco salad meal and strawberry shortcake will be available for purchase from Grades Twelve and Eleven respectively.

PLEASE NOTE THE FOLLOWING IMPORTANT INFORMATION:

- **On Thursday Morning, May 3 (the morning before the event)** all families are asked to bring flowers and greenery for the head-garlands and general Faire décor.
- Friday morning after drop-off volunteers are needed to set-up May Pole dancing area
- Please wear white or pastel clothing- especially students.
- During the May Pole dancing, please remember to hold the space around the students as we would in any other performance, with quiet attention and reverence!
- As always, please refrain from taking pictures during the event, especially during the May Pole dancing.
- Bring cash for the Faire activities/offerings and the meal/shortcake.
- Bring blankets for seating, utensils and plates for eating, and hats and sunscreen for protection.
- Volunteers are needed! The May Faire volunteer sign-up sheet is on the Main Office door! Decorating, clean-up and parking assistance, as well as the filling of various May Faire roles (pocket ladies, ticket-sellers) are being sought, so PLEASE volunteer by signing up on the main office door as well as for your own class activity or offering.

Thank you!



Kindergarten Teacher News

It is with real joy that we announce the hiring of Saree Heydenfeldt—otherwise known as Miss Saree—as our Lead Yellow Rose Kindergarten teacher, beginning this fall.

Saree has been working in our Early Childhood village consistently for three years now, wearing many hats and aprons.

As her colleagues, we have been highly impressed by her teaching skills and her attention to detail, in the classroom and behind the scenes. Equally notable is the way the children both admire her and delight in her presence. We often hear the refrain, “That’s Miss Saree!” as she goes about her work every day.

Her love for children and her dedication to working with the young child is inspiring. We are so grateful to be able to continue working with Saree in this new capacity.

We look forward to introducing her more formally in an upcoming issue of the *Messenger*.

~ The Early Childhood Core Group



Elections for the Board

This is the time of year when the SWSF Board of Directors holds elections for new and continuing members, so please watch your mailbox for ballots and ‘Vote!’ (Note: only SWSF Corporation members may vote, but all parents are eligible to become a member: look for the Eligibility Form as you complete online re-enrollment).

As you probably know, the Board is comprised of a mix of parents, teachers, and alumni/ae, and manages the legal and financial responsibilities of the school. If you have general professional or management experience, expertise in financial and legal arenas, or just a strong interest in serving the school, we would love to talk to you. Although the candidates for current board seats have all been selected via a thorough process, there are still many openings on committees for those who would like a more specific focus or who are new to the school. Please feel free to come to any board meeting or speak to any member about opportunities to serve in this capacity.

Questions can be directed to Board President Jefferson Buller at jjbuller@sonic.net.

Online Re-Enrollment Due by May 4, 2018

Re-enroll your student(s) for the 2018-2019 school year now!

In order to secure your student’s spot in the upcoming new school-year, re-enrollment must be completed by May 4, 2018.

After May 4, enrollment will be opened to wait pool applicants, of which there are several. The link to Online Re-Enrollment is accessed through the Parent Portal (portals.veracross.com/swsf).

Please reference the email regarding re-enrollment, sent to all parents on Monday, April 23, for more information.

If you have questions or need assistance with any part of the process, please contact Andrea Trinei, Registrar, at registrar@summerfieldwaldorf.org.

For questions regarding your contract (tuition, fees, financial aid), contact Judy Reid in the Finance Office at judy@summerfieldwaldorf.org.

Spring Music Concert

Tuesday, May 15, at 7pm in Sophia Hall

The High School Orchestra, Choir, Recorder Ensemble, and American Music groups will charm, enthrall, and delight one and all in the Hall.

Students will present their musical talents for family and friends in our High School Spring Concert. Everyone welcome!



Sign Up for Earth Ecology Camp!

Earth Ecology Camp is filling up fast. We love to offer our Summerfield students this wonderful opportunity to learn ecology, arts and farming in the permaculture garden. Please sign up today!

Camp runs June 18-22 and is for students aged 10-14.

~ Thanks, Ronni Sands

ALUMNI PROFILE: **Sydney Conner** CLASS OF 2012

Interview by Caryn Stone, Development Coordinator

Please tell us about your current work.

I work at Levi Strauss & Co as a merchant for the Dockers brand. I interned at Dockers the summer after my junior year of college, which led to a full time job post-graduation. I have now been there for about one and a half years.

As a merchant, I work to put together our product assortment that will be sold in the US market and support our sales team in bringing it to market. My job is to be an expert on the US men's apparel market trends and our target consumer's needs and make sure that the product we sell is successfully addressing both of these, while staying true to who we are as a brand.

Did you always know you wanted to be involved in this field?

Yes, although it has evolved over the years. From a young age, I loved clothes and dressing up. I have always seen clothing as an external way to express one's individuality and as an outlet for embracing the spectrum of characters we all embody at different times. As I got older, I became more interested in the business side and the importance of consumer insights. Being able to study people and then channel that into products that will benefit their life is fascinating to me.

Overall, I think I've been interested in the retail industry since early on in high school as a field where I could combine my strength in academic subjects with my love of creativity and design. I graduated from Cornell University in 2016, having studied Fiber Science and Apparel Design with a concentration in design management and a minor in business. And I had multiple internships in the field that helped me to refine what specialty I was interested in, which led me to merchandising.

How did your experience at Summerfield impact your life? How about your career choice today?

A really important part of my experience was learning how to build relationships and community with a wide range of people. Because the school is quite small, I was encouraged to build close relationships with my peers, teachers and the supporting staff, which has had a positive, lasting impact on my life. In college, I felt comfortable approaching teachers in classes of 200 and building the same relationship with him/her as I did with my teacher in a class of 20. In my career, this has been valuable, as I work closely with colleagues across the whole management structure. Summerfield instilled in me a natural sense of equal value, which has encouraged me to foster close relationships with people from all different teams and levels.

Do you feel that your education at Summerfield prepared you for life (or college) and your career?

Absolutely. One of the biggest benefits I got from Summerfield was strong leadership and ownership skills. In Waldorf education you are taught very early to own your work—through main lesson books, academic projects (culminating in your senior thesis) and even semester-long art projects such as the fire poker in ninth grade and the senior portrait and bust. Maintaining and completing these projects takes individual leadership and ownership, which are invaluable skills for college and the real world. In college and certainly in life, there isn't always going to be someone there, telling you what to do or having the same level of care in your work, so it falls on the individual to be one's own leader. Learning via creation through to completion taught me accountability for my work and the ability to organize my thoughts cohesively.

Do you see yourself continuing your current work/education/path?

Definitely. I love my job and, particularly with the major changes happening in the retail industry with the rise of e-commerce and technology, there is always something new to learn and a new challenge to face. I haven't ruled out graduate school for an MBA, but right now I am really enjoying working.



SYDNEY CONNER AND HER FATHER FRED BASSETT

Pieces of April from the Summerfield Farmyard

By Farmer Dan

Socrates used to love to wander through the marketplace and look at all the things he could do without. Over the long and pleasant recent spring break, while wandering through my double garage and then my backyard, there sure were a lot of things that I discovered would be very easy to do without. Earlier, during the break, while standing on the golden cloth of sand out at Drake's Bay on Point Reyes, it had been easy to be mesmerized by all the wrack that had washed ashore in the windy bay. This gave me pause to reflect on just how much wrack, so to speak, had washed ashore into the lives of the students I teach, and I asked myself when some "spring cleaning" would be in order in the curriculum for each grade. What had I brought that the students could do without, and what had I brought that was essential? How do farming and gardening lessons enhance and deepen the way and the extent to which interest, concentration, enthusiasm, and adaptability are able to develop, allowing for real, soul-spirit interest in other people and in our world?

Some kindergarteners and many first graders are losing a lot of their baby teeth and are unable to eat their almonds for snacks on the farm. The kindergartners still love to go on annual Easter egg hunts on the farm and, this year, it would have been very easy to hide an egg in or too close to a fresh patch of poison oak—it is a lush year for poison oak. Bees have

been swarming this week. A baby owl fell from its high nesting box and died, and then a second baby fell and was found in time to be rescued and brought to the raptor hospital to be incubated and re-nourished. When intense rains suddenly ceased, the somewhat barren pasture suddenly produced a bounty of towering star thistles. A greenhouse full of flats of seeds planted before spring break suddenly sprung up and were begging the sixth grade students to please, please be transplanted into six packs to continue to stretch and grow. The cows were bumping their backs and heads on the rafters in the winter barns in a sudden urgent need to have the foot-and-a-half of manure shoveled out from under their feet to be whisked out to the new compost rows in need of forming on the farm. Peach trees developed peach curl and needed the diseased leaves pinched off to ensure a healthy summer crop. The apple trees in their graceful row had their trunks covered with snails from the tall, rain-soaked, spring grasses and needed their annual "painting" of Biodynamic tree paste to protect them from bugs, fungus, and the scalding of the mid-summer sun that is fast approaching. The raspberry patch requested attention as well, as the old canes needed pruning back and, here and there, plants were in need of replacement. A new Jersey calf was also gently swelling the belly of mama May, due in early June, with the renewed promise of fresh yogurt soon to be had in our recently refurbished farm stand...

In other words, life goes on all around us and the students thrive when immersed in it. Throughout the busy month of May, all the field crops have to get planted, mostly by the third graders, which include potatoes, onions, field and broom corn, winter squashes and pumpkins, shelling beans, and an assortment of flowers for bouquets and some for used for dying wool in the handwork classes. The rebel,



PHOTO BY IREN BARNUM

off-season crop, garlic, that was planted in the winter is thriving and will be ready for a late June or July summer harvest. Tomato plants and trellises have been set up in the new hoop house, as well as summer squashes and ongoing lettuce to help supply our student lunch program. Then, too, the student gardens in the farmyard are being busily tended in order to be ship-shape for the Farm to Feast celebration soon to be held under the blooming Walnut tree near where the lavender plants in need of a snipping await the snippers of busy student helpers. And yes, the chickens and ducks continue their dirtying work so that the weekly pond and chicken house cleaning remains a forever task of the cheerful fourth graders under the supervision of the newly shorn sheep and cashmere goats, with frequent breaks to hold and cuddle the rabbits that reside in their cage next to the duck pond.

So back to the curriculum planning this article began with... my introspective question about what I have been bringing to the students. Really, of course, the question is what has the land and the weather and the rhythm of the seasons

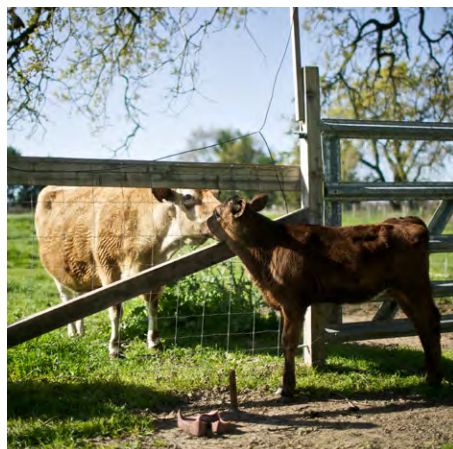


PHOTO BY MIGUEL SALMERÓN



brought to the students in the daily tasks at hand, and how have I merely orchestrated what needs to be done in a reasonably coherent pedagogical fashion? Physical work helps the students

(and adults) find a point of rest in the center of their being by encountering a world where all things are at rest in the same way. To see, judge, and act from the point of rest in ourselves, so much disappears and all that remains falls into place. This transformation happens in the students of all ages who are given the opportunity to work on the farm and in the gardens.

As spring rains retreat, one's being seems increasingly filled with light and people seem to start to shine a little bit more. The peeper frogs and the crickets seem to sing with their whole bodies and, looking around Sonoma County, one wonders just how many miracles a human being beholds in one's lifetime while realizing in a few sacred moments that yes, there is still ecstasy in a world of cell phones and politics. The world's unspeakable kindness radiates from new light in the fields in the way a farm animal or a young child looks into your heart at the most unsuspecting moment. Or when a young student shyly shares a joke with the farmer, after first asking if I am a vegetarian, and then continues with, "How do you stop Canadian bacon from curling in the pan? Take away its tiny brooms." And then scampers back to class.

Like students sometimes do, while I was hiking with her class over the hills on a recent field trip to the Bale Grist Mill State Park, a third grader asked me nonchalantly, "Farmer Dan, do you pray?" and followed her question up with "What is praying, anyway?" Here is the poet Mary Oliver's answer to her question:

PRAYING BY MARY OLIVER

*It doesn't have to be
the blue iris, it could be
weeds in a vacant lot, or a few
small stones; just
pay attention, then patch*

*a few words together and don't try
to make them elaborate, this isn't
a contest but the doorway*

*Into thanks, and a silence in which
Another voice may speak.*

Blessings on your gardens!
Warmly,
Farmer Dan

Registration for Summer Camps Still Open!

Farm Camp (ages 4–5 & 6–10): one-week sessions offered from June 18–July 27;

Earth Ecology Camp (ages 10–14): week of June 18;

Circus Camp (ages 6–8): one-week sessions offered from June 11–29;

Circus Camp (ages 9+): 2 week-long sessions from June 18–29;

Flying Trapeze Camp (ages 8+): 3 one-week sessions from June 11–29, mornings or afternoons

Visit summerfieldws.org/summerprograms for more information or email farmcamp@summerfieldwaldorf.org or circuscamp@summerfieldwaldorf.org.

~ Lisa Hensley, Summer Camps Registrar



The Coffee Cart Needs More Mugs!



Can you help? We badly need more mugs, and forks and spoons, for the Coffee Cart. Please leave with kitchen staff or outside on the bench.

Circus Waldissima at the Apple Blossom Parade

Students from Summerfield showed off their circus skills in downtown Sebastopol as part of the annual Apple Blossom Parade on Saturday, April 21.



Parent Robyn Prusky writes, "For Dagan, learning unicycle was one of the biggest confidence builders he has had at Summerfield. I cannot believe he built the core, and muscle strength, to ride. During the parade, when the audience yelled and clapped for Summerfield, the children beamed with happiness."



EXTRA Circus Summer Camp for Advanced Performers

Circus Waldissima has added an extra Advanced Program Summer Camp for grades 5-12 students who will get to use the skills they already know to begin creating routines and learning performance skills! We will focus on stage presence, working as an ensemble, what makes a compelling performance, and how to create an act that is truly your own! We will also learn some new tricks and skills. Students should possess a basic understanding of any circus skill (juggling, aerial, clowning, tumbling or any other skill).

When: June 11-15 or June 18-22 **Time:** 1:30-4:30pm **Cost:** \$195 **Register by:** May 18

Visit www.summerfieldws.org/summerprograms for more information or email circuscamp@summerfieldwaldorf.org.

~ Lisa Hensley, Summer Camps Registrar



CIRCUS WALDISSIMA presents

Summer 2018

FLYING TRAPEZE CAMP



Circus Waldissima is teaming up with the folks from Trapeze Arts in Oakland to offer **Flying Trapeze Summer Camp** on a full size rig at Summerfield Waldorf School and Farm in Santa Rosa.

This is the closest you will get to fulfilling your dream of flying and soaring through the air. Each lesson is individualized and students progress at their own pace. By weeks end, students can have a full repertoire of skills!

The camp is for **ages 8 and up!** Morning and afternoon sessions are available, or do an afternoon drop-in* as space allows.

ONE-WEEK SESSIONS Ages 8 and up
JUNE 11-15 | JUNE 18-22 | JUNE 25-29

Choose from

AM SESSIONS (4 hour)
8:30 AM - 12:30 PM \$290/WEEK
-or-
PM SESSIONS (2 hour)
1:30 PM - 3:30 PM \$195/WEEK

Aftercare is available Monday-Friday, from 1:00-3:30 pm at \$20/day with advance sign up.

*Afternoon drop-ins \$40 per day (space permitting)

The Messenger Marketplace

Summerfield Waldorf School and Farm is not affiliated with, and does not endorse, any of the individual initiatives or services advertised in this classified section. Advertisements are screened for appropriateness and made available to community members to use at their own discretion

Training

Center for EDUCATIONAL RENEWAL

WALDORF
TEACHER
TRAINING
SONOMA
COUNTY

Center for Educational Renewal opened its program in 1990 on the beautiful, 40-acre campus of Summerfield Waldorf School and Farm, enjoying a setting that is integrated with nature and a vibrant Waldorf community! Director Don Basmajian brings his ever-growing love of teaching and the Waldorf curriculum to our teacher training students as deepen their understanding of Waldorf pedagogy, human development and Anthroposophy. An in-depth study of the arts and the curriculum serves as the foundation for our students' self-transformation. In addition to coursework, students complete annual classroom observations and student teaching. Graduates are prepared to become professional Waldorf teachers at the early childhood, lower school and high school levels.

New course begins June, 2018! ednew.org Four years, part-time, September - May, Wednesdays and Fridays, 3:30pm-6:30pm; Two-week Summer Intensive each June.

Community Events

Sebastopol Family Dance

The Sebastopol Family Dance is Saturday, April 28! Come join the fun from 5-6:30pm at Wischemann Hall (465 Morris St, Sebastopol). We have live music, all dances are taught and easy for all ages. \$5/person, \$10/family. Snacks and door prizes.

The Christian Community

The Spirit of Spring - Fri., May 4 at 3:30pm. Parents and children (kindergarten through 5th grade) are invited to celebrate 'The Spirit of Spring' through story and songs. The children may make a card and simple crafts as presents for Mother's Day. We will meet on Friday, May 4 from 3:30-5pm at Dan's kindergarten (Sunflower) at the Sebastopol Charter School near Libby Park by Brookhaven School in Sebastopol. Presenters are Rev. Craig Wiggins and Theresa Melia. If you have questions, please call Theresa at 824-0645. We hope you can join us!

Fri., May 4 - 7:45pm - discussion with Rev. Craig Wiggins in the Eurythmy Barn

Sat., May 5 - 9:15am children's story and song (1st-6th grades), 10am children's service, 10:30am The Act of Consecration of Man (service is for adults - childcare available) followed by a potluck lunch afterwards. All events are in the Eurythmy Barn.

For confirmation classes for children 7th grade and up or for baptisms, contact Rev. Craig Wiggins at (484) 557-8086 or craig@wiggins.nl. For further information or to be put on our email list, contact Elinor Biller at 696-4731 or biller@sonic.net. All are welcome.

Classes/Workshops/Camps

Class, Party & Camp Offerings at Circle of Hands

6780 McKinley St. #120, the Barlow,
• 707-634-6140 • circleofhandswaldorfschool.com



Felted Moth: with Denise Marshall on Saturday, May 12, 10:30am-4pm. For adults, \$100 includes materials.

Birthday Parties with Monica: Let us plan your child's special day! Two hours in our beautiful party/workshop room - includes set-up & clean-up; handmade craft; use of linens & utensils; tables & chairs; personalized or themed decorations; party game. Added options include a handmade birthday crown \$25; face painting \$45/hr; character visit \$75 p/hr; invitations \$2 each. Starting at \$120 for 4 children; each additional child/craft \$15. Limited space for up to 4 adults during the party. To reserve & schedule, call Monica at 236-2829.

Summer Art Camp with Monica: for children ages 5-8. 9am-2pm, Mon.-Thurs., \$265 p/session. June 11-14, Thumbelina; June 18-21, Snow White & Rose Red; July 2-5, Pirates & Mermaids; July 9-12, Jungle Animals; July 16-19, Horses; Aug. 6-9, Feathered Friends.

Art Camp @ Summerfield

For children ages 6-12. Explore and create with a variety of art forms: drawing, painting, sculpting and print-making, walks in nature. Dates: weekly 06/25; 07/2; 07/9. Sign up at artcampkuprian.weebly.com or contact Renate @ (707) 495 7543 or kuprian@sonic.net.

Cherry Ridge Nature Camp has openings for summer

An outdoor Waldorf camp on a beautiful 5 acre remote property for 3.5-7 year old children. Activities include tree climbing, gardening, walks in nature and woodworking/crafting. Contact Ms Donna for schedule details at dstusser2@comcast.net. Flyer on the bulletin board at SWSF.

Teacher Training IX Graduating Class Presents

MOMO

A play based on the
fantastical novel
written by Michael Ende
Directed by Linda Price

Performed on Sunday, the 6th of May at 2:00 PM
One Show only, doors open at 1:30 p.m. (Recommended for ages over 7)
Adult tickets \$7/ Under 12 \$5 - Sophia Hall at Summerfield Waldorf School
655 Willowside Rd. Santa Rosa, CA 95402

Introduction to Anthroposophy

Public classes now registering! With the theme "The Duality of Evil" we will explore some of Rudolf Steiner's concepts through study, artistic experiences and discussion. Tuesdays: May 1, 8, 15, 9-11 am, in Sebastopol. \$55 for the course, \$20 per session. To register or for more information contact Tonya Stoddard (tonya@threefoldcounselling.com)



The Art of Handwork: Wednesday mornings in the Handwork Room

Our very own master handwork teacher, Lisa Wilde is offering a weekly handwork group from 8:30-10am on Wednesdays. Come and enjoy the magic our children experience as Ms. Wilde presents different handwork projects based on the interests of the participants, using a variety of materials and techniques; such as felting, plant dyeing and weaving. Classes are \$10. Drop-ins and all skill levels from beginner to expert are welcome. Participants may also bring their own handwork projects and get advice or just work with the group.



Garden Teacher Training Intensive

Ronni Sands & Willow Summer will be offering a Garden Teacher Training Intensive this summer in the Permaculture Garden at SWSF on June 30, July 1 and 2, 9am-4pm. This course will be theory and practical projects for creating an outdoor learning experience for children K-12. Using their book, *Growing Sustainable Children*, the course is appropriate for parents, teachers, farmers and anyone who wants to deepen their own gardening practices. To sign up, email figwortis@gmail.com. Cost is 300-350\$. Pay by May 1 and save 50\$. Questions, call Ronni @ 823-3192.

SUMMER THEATER CAMP

WHEN: MONDAY JULY 9 - FRIDAY JULY 27, 2018
9:30 am - 3:00 pm
Performance Friday July 27

WHERE: SUMMERFIELD WALDORF SCHOOL AND FARM
655 Willowside Road, Santa Rosa, CA

WHO: AGES 9-13 YEARS OLD

PLAY: SHAKESPEARE'S TWELFTH NIGHT

COST: \$625

DIRECTOR: Liz Turkel Vose, Speech, Storyteller and Theater Instructor; Bay Area Center for Waldorf Teacher Training, Emerson College, Chekhov Theatre Ensemble

STAGE MANAGER: Hannah Jane Dakin

For registration forms, please email: yeayunn@me.com

AN INDEPENDENT INITIATIVE HELD AT SUMMERFIELD WALDORF SCHOOL & FARM

Services Needed/Offered

Calling for an aspiring sustainable soap business entrepreneur & maker

Fabled Frog Soap is a unique soap & skincare business that needs a new owner to see it bloom into its great potential! More info: fabledfrog.com/sales-document. Contact Kusuma: 707-634-4764 / kusumacreates@gmail.com

This is Planting Season!

LaRose Gardens: Gardens done with a woman's touch. I design, enhance, and maintain gardens of all styles and shapes. Experienced in residential, commercial, organic farming, and drip irrigation.

Personal Chef ~ Homemade Meals ~

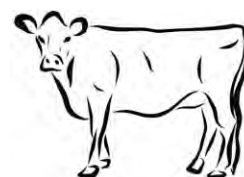
Are you too busy to cook or need a break from your own cooking? My Personal Chef services can make it easier for you to put delicious home cooked meals on the table. Let my passion and experience for yummy, nutritious, seasonally appropriate cuisine support the health and well being of your family. To reduce the time it takes packaging and increase freshness I cook at your home. Please contact me if you are interested. References available. Alyssum Revallo. alyssumskitchen@gmail.com (707) 480-0655.

New SWSF Staff Member Seeking Rental

Summerfield family of 3 looking for 3 bedroom home available before the end of May in West County (preferably Sebastopol/Occidental/Forestville) for short to mid-term. Please contact Audra at 248-766-0525 with any opportunities.

Bone broth made by Farmer Dana

Made to nourish the mind, body and soul, with grass-fed beef bones sourced from Sonoma County Meat Company, our bone broth is incredibly nutritious. Rich in protein, collagen, and minerals, bone broth is very alkalizing and good for your gut flora. Drink on its own or use as a base for soups. \$8 per quart. Call or text (707) 570-5484 to order.



2 FARM UNIT RENTALS

600' STUDIO \$1500 450' UNIT \$1000
KITCHEN, SHOWER, BATHROOM,
BATHROOM, 1 CAR SHOWER, 1 CAR,
SPACE, ORGANIC PLOT ORGANIC PLOT
EMAIL RENTAL.TOWER@SONIC.NET AVAIL JULY

The image is a collage of three photographs. The left photo shows a small wooden building with a red roof, likely a farm unit. The middle photo shows a lush garden with various plants and flowers. The right photo shows the interior of a room with a window and some furniture.

Summerfield WALDORF SCHOOL AND FARM

SAILS

the school store located in the main office

Books, candles, dolls, playsilks, calendars, crayons, and more.

20-50% of "sails" from the store go to Summerfield.

FAMILY PRACTICE ACUPUNCTURE

JENNIFER MONIN, L.AC., M.S.
Acupuncture, Herbal Medicine, Yoga

Specializing in Women's Health, Pediatrics, & Facial Rejuvenation

Now Accepting Insurance

Waldorf-trained, Summerfield mom with 20 years experience

WWW.JENNIFERMONIN.COM
JENNIFERMONIN@GMAIL.COM
415-706-2314

Relieving pain - Cranial-sacral, gentle mobilization & Classical Homeopathy

Are you or your family living with chronic pain or old injuries? Kids suffering with braces? I address the source of pain and get you back to a life of ease in your body. Fully clothed sessions. Elizabeth Lakin CCHH, CCSP, NTS • elizabeth@nurturingvitality.com • 707-583-2370 • www.nurturingvitality.com • by appointment in Sebastopol •

Childcare and In-Home Help

Waldorf mother of a 7-yr-child offering childcare services and/or light help in the home (cooking, cleaning, etc) during weekdays when my daughter is in school. Please contact me for more information if you are interested. I have worked for a few different families in the area for the last 4.5 years. Felicia Channing 707-327-8287 or zabeldy@gmail.com.

Singing and Piano Instruction with Mary Beard

I am an experienced teacher, a Summerfield Waldorf founding parent and original creator of the school's instrument music program. My studio is located in Santa Rosa. Please learn more at marybeardmusicstudio.com. Contact me at marymezzo@sonic.net or 707-546-8782.

Rick Concoff Violins

Quality string instruments for rent or sale at below-market prices plus rent-to-own & accessories available! Call 707-477-9196 for an appointment.

Sebastopol Strings Academy

Private Cello Lessons, Group lessons in Beginning cello, Intermediate cello, and Elementary Piano for String Players, and Music Theory. Maureen Caisse. 707-206-1566. sebastopolstringsacademy.com.




Mac+Tech
APPLE COMPUTER SUPPORT since 1988
707-827-3560 ~ 415-785-4144
POONA ROONZ, ACSP
SUPPORT@MACPLUSTECH.COM



persinger architects
and associates
We make your dream a reality.
6940 Burnett Street, Sebastopol
www.PersingerArchitects.com (707) 829.0700

HOLISTIC FAMILY DENTISTRY
Dr. Marie Mallory, D.D.S.



Trained in Germany and in the U.S., Dr. Mallory delivers preventive, restorative, cosmetic, endodontic and orthodontic dentistry with gentle impeccable care for children and adults.
Healthy Alternatives ~ Quality Supplements
Mercury/Metal Free

76 DOCTORS PARK DRIVE, SANTA ROSA ~ 542-7800
BY APPOINTMENT: MONDAY - THURSDAY, 8AM - 1PM, 2PM - 5PM

Home is where my family is.



SANDRINE DALIGAULT
REALTOR® DRE:02036042
CENTURY 21 Alliance

www.sandrinerealestate.com
707-326-6373
sandrinerealtor@gmail.com

John S Woo DDS MS



Orthodontics

Braces, Invisalign, Sleep Apnea Appliances, Nightguards

Ph: 829.5513
220 Petaluma Ave, Suite C
Sebastopol CA 95472
SebastopolOrthodontics.com
Second office in Petaluma Ph: 762.0211

Initial Examination
is
Complimentary



Waldorf Parent



Parenting
Requires Enormous Effort

Rejuvenate
Your Mind and Body



osmosis.com | Freestone | 707.823.8231

ADVERTISE IN THE MESSENGER

Summerfield's *Messenger* newsletter is published once a month during the school year, and has a distribution list of 1,000 people! If you are interested in advertising in the *Messenger*, please visit our website at www.summerfieldws.org/messengeradvertising, or email messenger@summerfieldwaldorf.org for more information.

Messenger

655 Willowside Road
Santa Rosa, CA 95401

Editor/Designer:
Adam MacKinnon

VISIT US ONLINE AT

www.summerfieldws.org



CHALK PASTEL STUDIES OF SAILBOATS BY THE EIGHTH GRADE
• A COLOR EXERCISE IN THE COMPLEMENTARY COLORS OF BLUE AND ORANGE •

TOP ROW (L-R): *SAILBOAT SCENES* BY CRUZ LERAS, SID GOVEA, ZOEY SUGINO
BOTTOM ROW (L-R): JEREMY FELTON, SOPHIA MOLINA, BEN SARNER